

LEASE

BUDDHA BUILDING

312 NW 10TH AVENUE
PORTLAND, OR 97209



Apex Real Estate Partners
415 NW 11th Avenue, Portland, OR 97209
503.595.2840 / www.apexcre.com

Tom Shimota, Director
503.595.2831
Tom@apexcre.com

Bruce Garlinghouse, Associate Broker
503.595.2829
Bruce@apexcre.com



CREATIVE WORKSPACE

LOWER LEVEL: ± 1,865 RSF

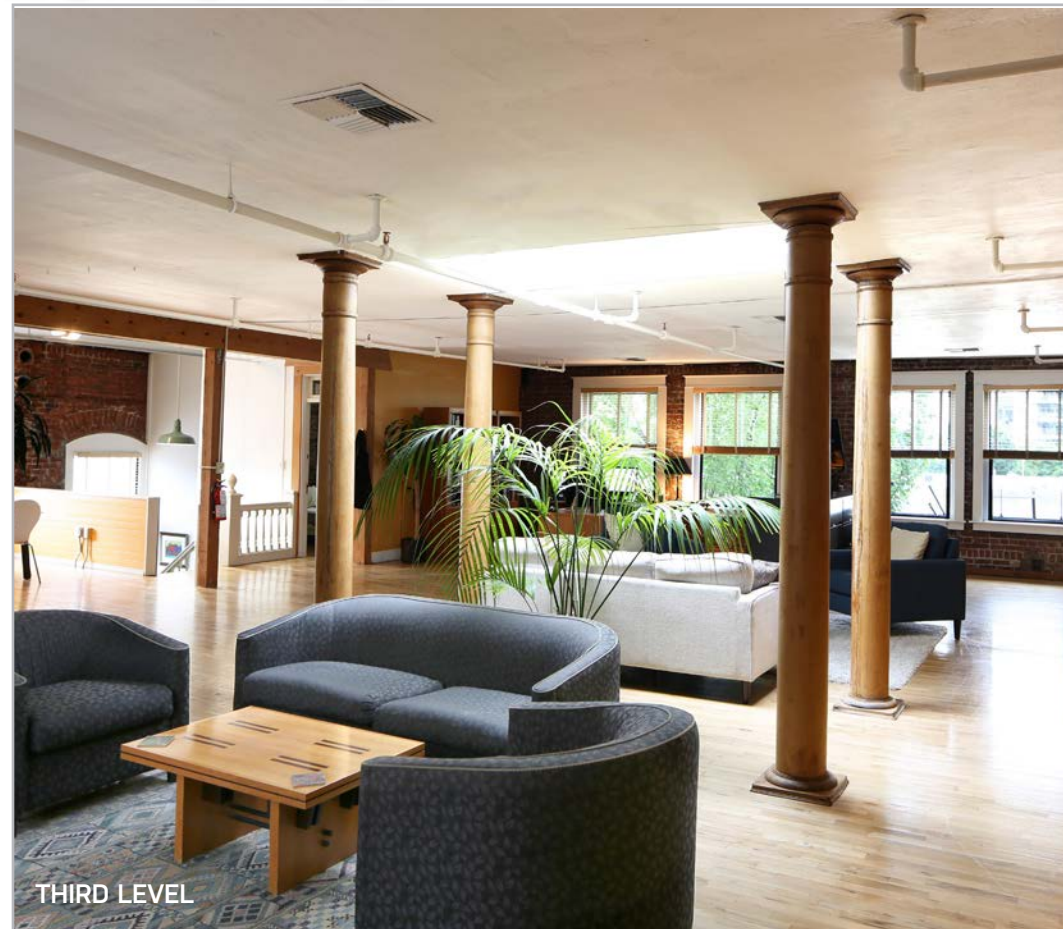
- Rate: \$15.00/RSF, NNN
- Open collaborative work area
- Natural light
- Exposed timber beams and polished concrete floors

SECOND LEVEL: ± 2,400 RSF

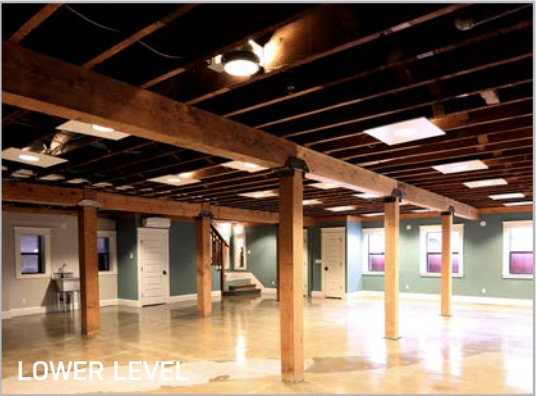
- Rate: \$22.00/RSF, NNN
- 4 private offices, 1 conference room, kitchenette, 2 private restrooms and 2 showers
- Private balcony

THIRD LEVEL: ± 2,302 RSF

- Rate: \$25.00/RSF, NNN
- Open work area with 1 conference room/private office, kitchen, and private restroom with shower
- Huge skylight allowing for abundant natural light throughout
- Private balcony



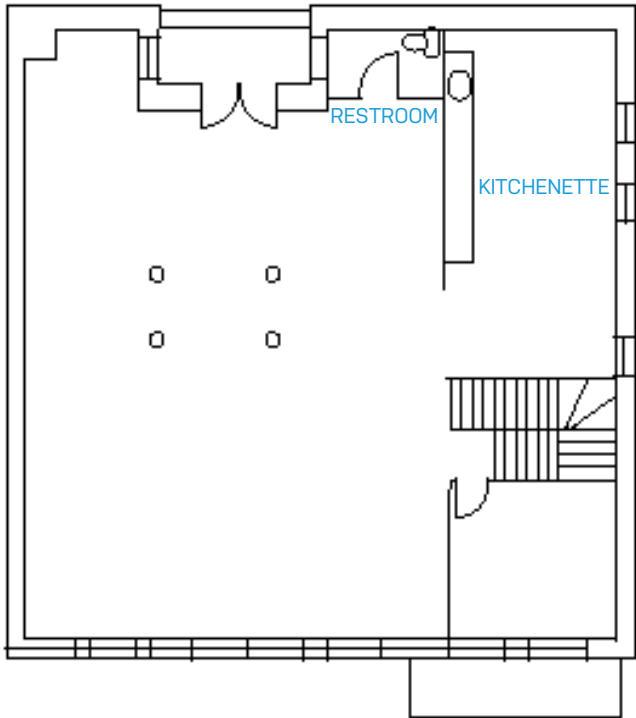
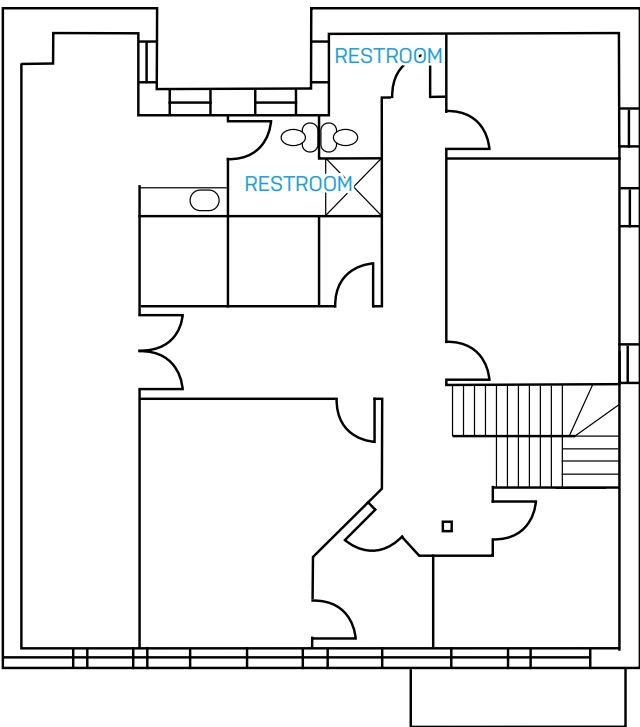
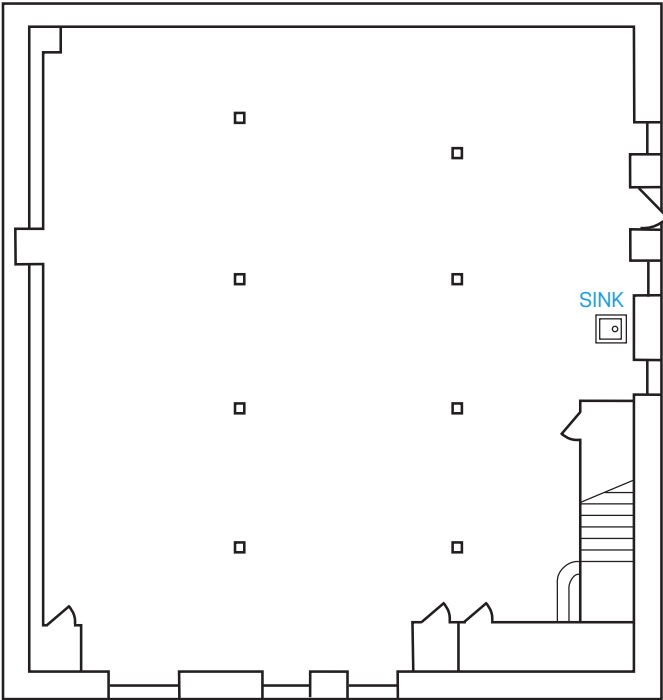
FLOOR PLANS



LOWER LEVEL
± 1,865 RSF

SECOND LEVEL
± 2,400 RSF

THIRD LEVEL
± 2,302 RSF



PEARL DISTRICT LOCATION

This urban neighborhood is an eclectic mix of tradition and modernity, providing the live/work/play environment desired by today's workforce. This convenient location in the heart of the Pearl District is highlighted by immediate proximity to public transportation and all of the city's major highways, allowing for easy access to the entire metropolitan area and the Portland International Airport. Surrounded by numerous retail, fitness and dining amenities, the Buddha Building delivers a truly irreplaceable tenant experience.



WALK SCORE 100
Walker's Paradise - Daily errands do not require a car



BIKE SCORE 99
Biker's Paradise - Daily errands can be accomplished on a bike



TRANSIT SCORE 90
Rider's Paradise - World class public transportation



- TRIMET STOP (PARTIAL LIST)
- TRIMET BUS
- PORTLAND STREETCAR
- TRIMET MAX

