









# FOR SALE

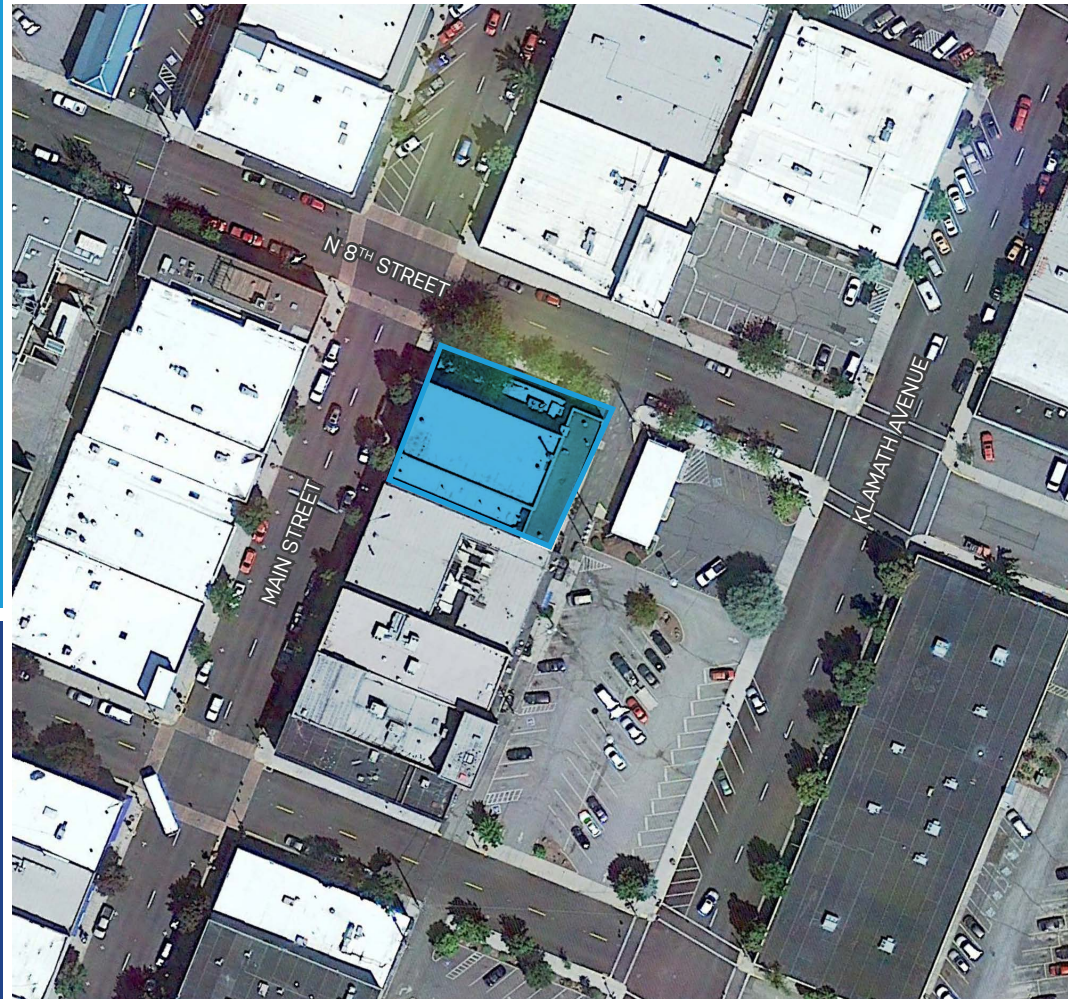
740 MAIN STREET  
KLAMATH FALLS, OR 97601

-  Building size  $\pm$  10,296 SF
-  2 story retail building
-  Site size  $\pm$  9,226 SF
-   $\pm$  10 parking stalls
-  Zoning CG - General Commercial
-  Located in an Opportunity Zone
-  Drive through
-  Please call for pricing guidance

Apex Real Estate Partners  
Max Schlesinger, Broker  
415 NW 11<sup>th</sup> Ave, Portland, OR 97209  
503.595.2840/ max@apexcre.com



HSM Pacific Realty  
Brock Switzer, Broker  
4260 Galewood St, Lake Oswego, OR 97035  
503.245.1400 / www.hsmpacific.com





# KLAMATH FALLS DOWNTOWN LOCATION



No warranty or representation, express or implied, is made as to the accuracy of the information contained herein, and same is submitted subject to errors, omissions, change of price, rental or other conditions, withdrawal without notice, and to any special listing condition imposed by our principals.