

FOR LEASE

MILLIKAN BUSINESS CENTER

14523 SW MILLIKAN WAY, BEAVERTON, OREGON 97005



Apex Real Estate Partners
415 NW 11th Avenue, Portland, OR 97209
p. 503.595.2840 / www.apexcre.com

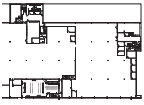
Rennie Dunn, SIOR
503.595.2845
Rennie@apexcre.com

Matt Cole
503.595.2836
Matt@apexcre.com



SIZE

± 43,421 SF



PARKING

UP TO
± 7 / 1,000 SF



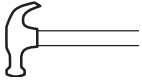
ASKING RATE

CALL FOR
RATES



OPEN LAYOUT

READY FOR
IMPROVEMENTS



ELEVATORS

1 PASSENGER &
1 FREIGHT



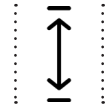
BIKE PARKING

SECURED BIKE
STORAGE



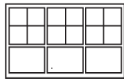
CEILING HEIGHT

18' CLEAR
HEIGHT



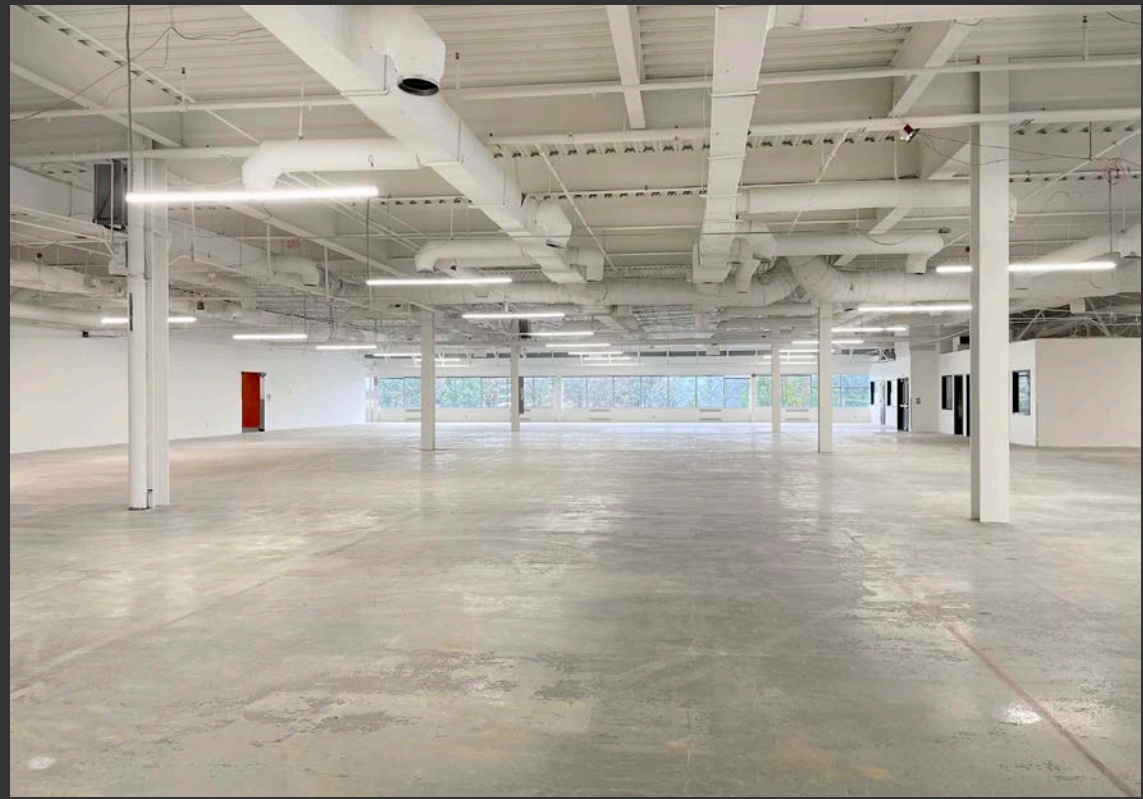
NATURAL LIGHT

ABUNDANT
WINDOW LINES



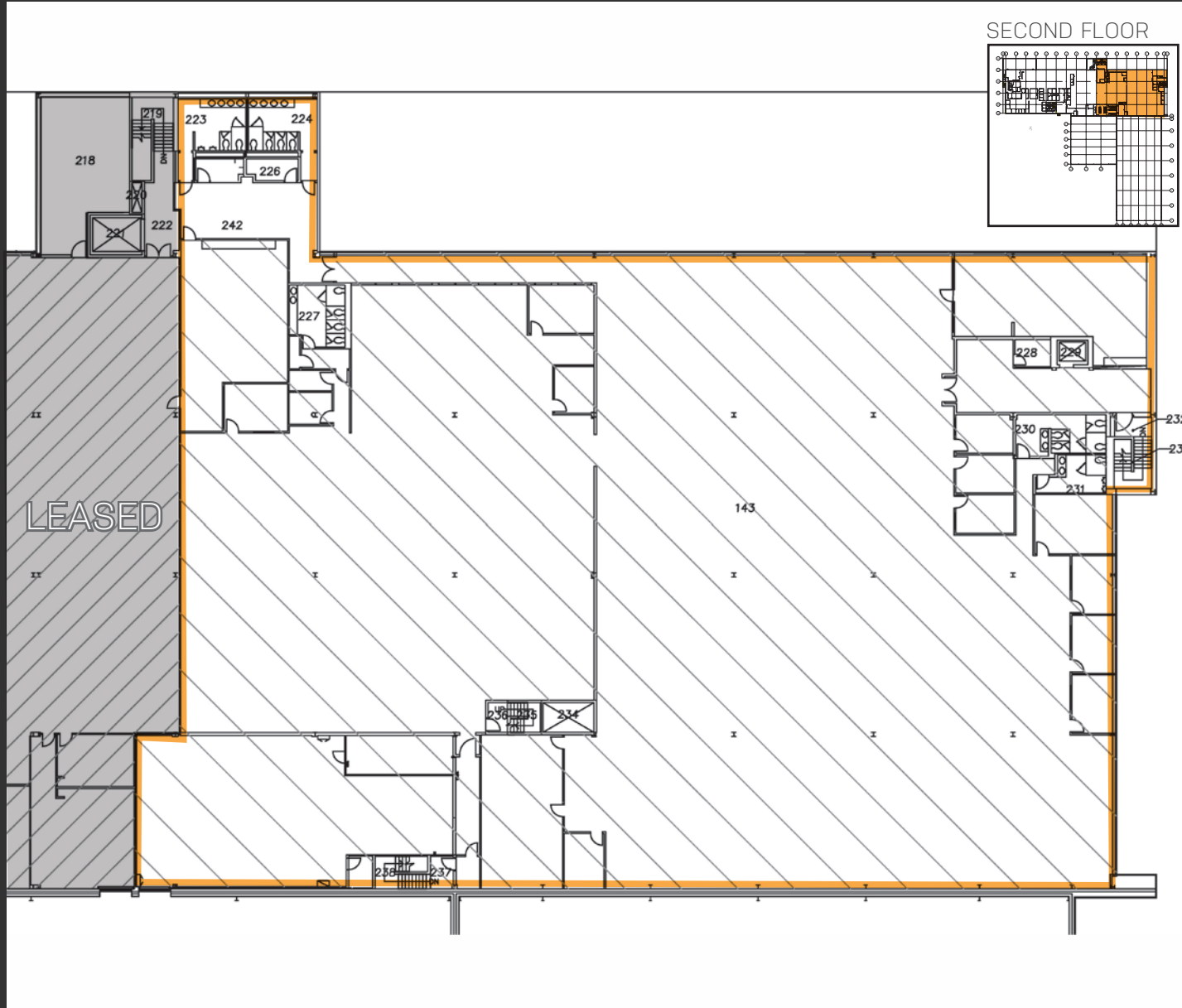
AVAILABLE

NOW!

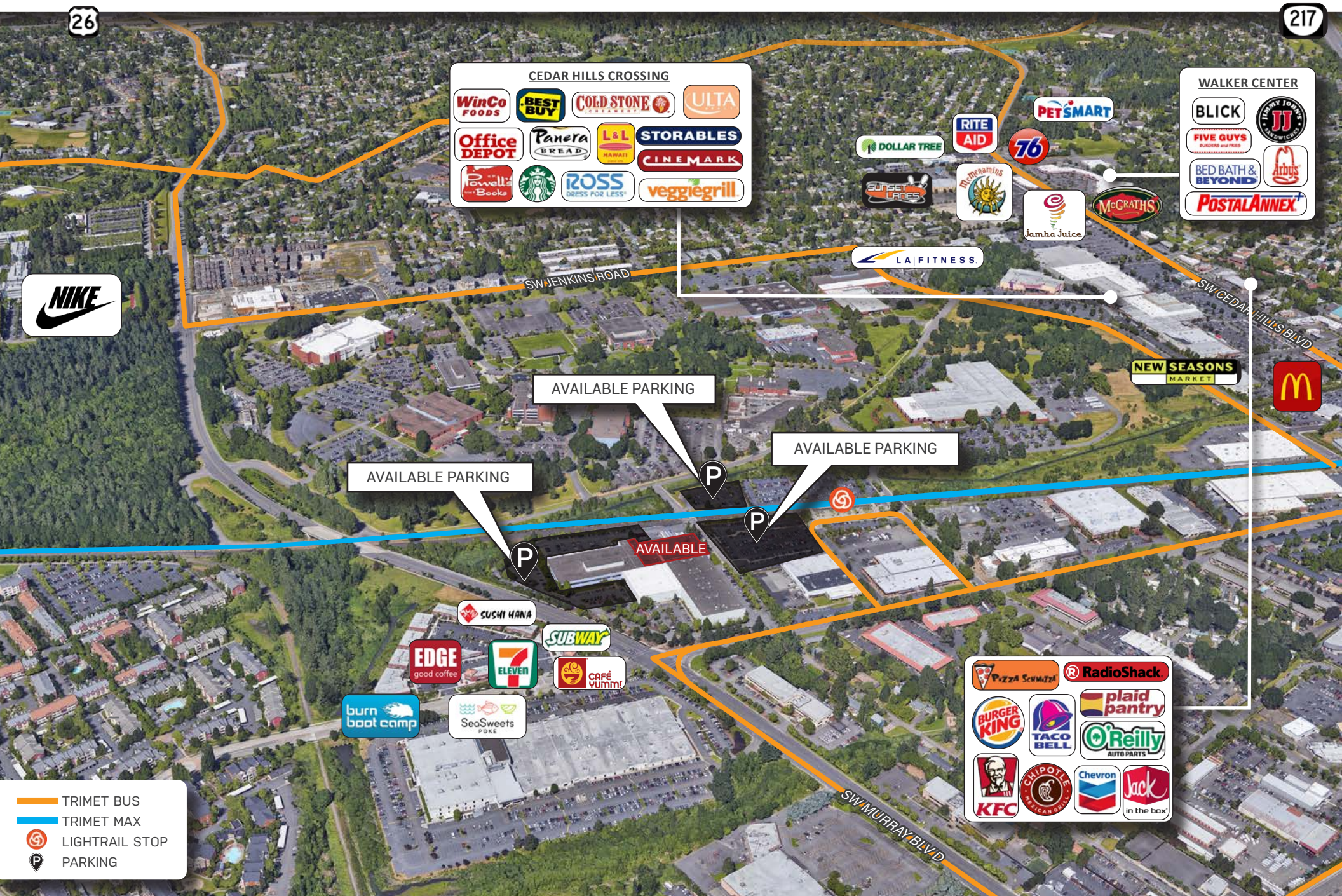


SECOND FLOOR PLAN (PARTIAL)

± 43,421 SF AVAILABLE



Millikan Business Center is excellently located just minutes to TriMet transportation, Hwy 217 and Hwy 26 which offer ease of access for tenants and visitors to and from all over the Portland Metro.



No warranty or representation, express or implied, is made as to the accuracy of the information contained herein, and same is submitted subject to errors, omissions, change of price, rental or other conditions, withdrawal without notice, and to any special listing condition imposed by our principals.