

WORKSPACE FOR LEASE  
**615 SW ALDER STREET**  
PORTLAND, OR 97205



Apex Real Estate Partners  
415 NW 11<sup>th</sup> Avenue / Portland, OR 97209  
P. 503.595.2840 / [www.apexcre.com](http://www.apexcre.com)

Max Schlesinger, Broker  
971.703.4702  
[Max@apexcre.com](mailto:Max@apexcre.com)



# FOR LEASE



2<sup>nd</sup> floor space ± 5,950 available



Great build-out with open work area with private offices and conference rooms



Shared 2<sup>nd</sup> floor restrooms and showers



16' high ceilings



Oversized windows provide abundant natural light



Secured floor with elevator access



Roll-up door with freight elevator



Ample hourly, daily and monthly parking in the connected garage available at market rates



Excellent public transportation access



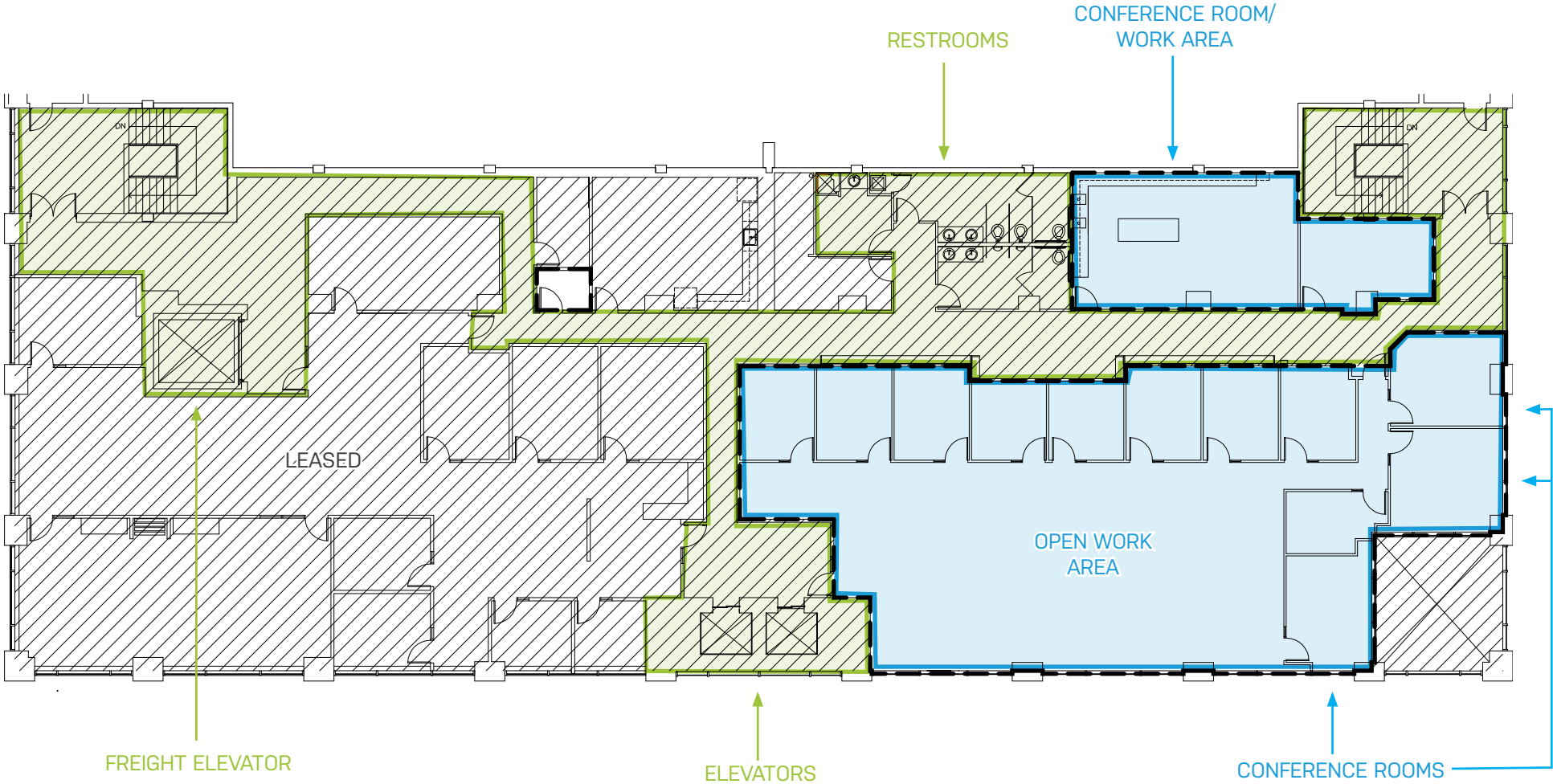
Central location in downtown Portland within walking distance to countless amenities



# SECOND FLOOR

AVAILABLE ± 5,950 RSF

COMMON AREA



No warranty or representation, express or implied, is made as to the accuracy of the information contained herein, and same is submitted subject to errors, omissions, change of price, rental or other conditions, withdrawal without notice, and to any special listing condition imposed by our principals.

# EXCELLENT DOWNTOWN LOCATION

