

FOR LEASE

PRIME PEARL DISTRICT OPPORTUNITY

1110 NW FLANDERS STREET
PORTLAND, OR 97209



Apex Real Estate Partners
415 NW 11th Ave, Portland, OR 97209
503.595.2840 / www.apexcre.com

Max Schlesinger, Broker
971.703.4702
Max@apexcre.com



AVAILABLE



SUITE 100: ± 3,000 RSF OFFICE / RETAIL



OPEN LAYOUT WITH BUILT-OUT WORKSPACES & RESTROOM



PRIME STREET FRONTAGE & VISIBILITY



AT GRADE LOADING RIGHT INTO SPACE



GREAT NATURAL LIGHT ON 2 SIDES



SUITE 200: ± 940 RSF OFFICE



GREAT BUILD-OUT WITH KITCHENETTE, MULTIPLE WORKSPACES AND PRIVATE RESTROOM

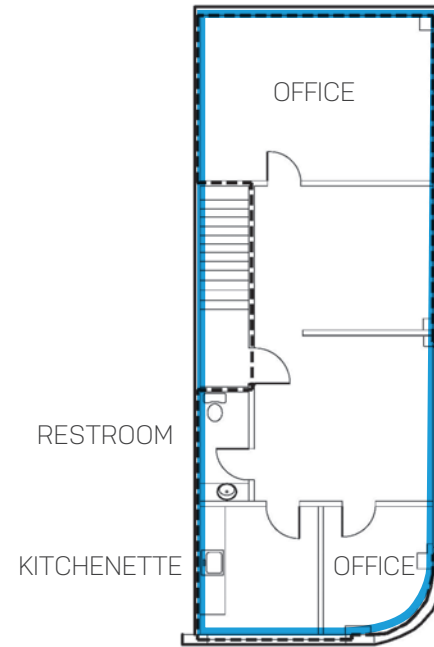


SUITE 201: ± 2,158 RSF OFFICE

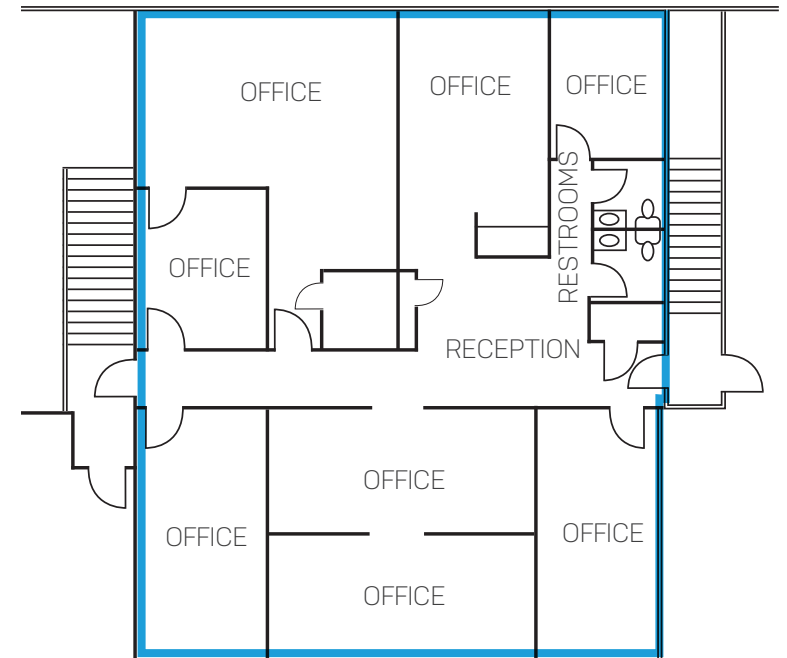


MOVE-IN READY BUILD-OUT WITH MULTIPLE WORKSPACES AND PRIVATE RESTROOMS

SUITE 200



SUITE 201



PROPERTY HIGHLIGHTS



CHARMING ART DECO INSPIRED BUILDING



EXCELLENT SIGNAGE OPPORTUNITY



FLEXIBLE DEAL TERMS



RESERVED, ON-SITE PARKING AVAILABLE



ON-SITE STORAGE AVAILABLE



EXCELLENT PROXIMITY TO RESTAURANTS, BARS,
ENTERTAINMENT AND SHOPPING



SUITE 100



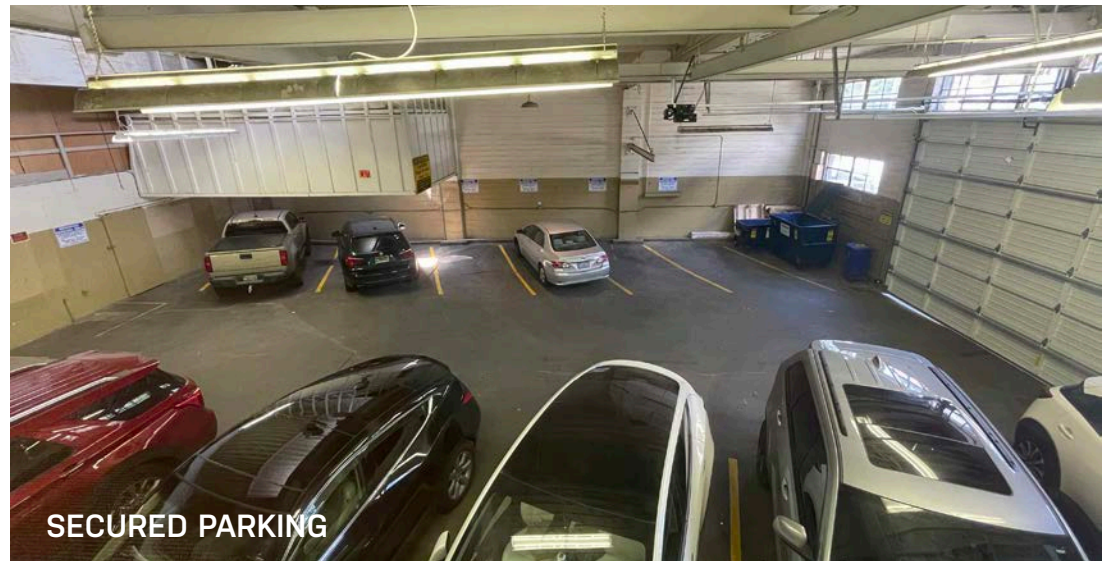
SUITE 201



SUITE 201



SUITE 100



SECURED PARKING

EXCELLENT LOCATION PEARL DISTRICT



No warranty or representation, express or implied, is made as to the accuracy of the information contained herein, and same is submitted subject to change of price, rental or other conditions, withdrawal without notice, and to any special listing condition imposed by our principals.