

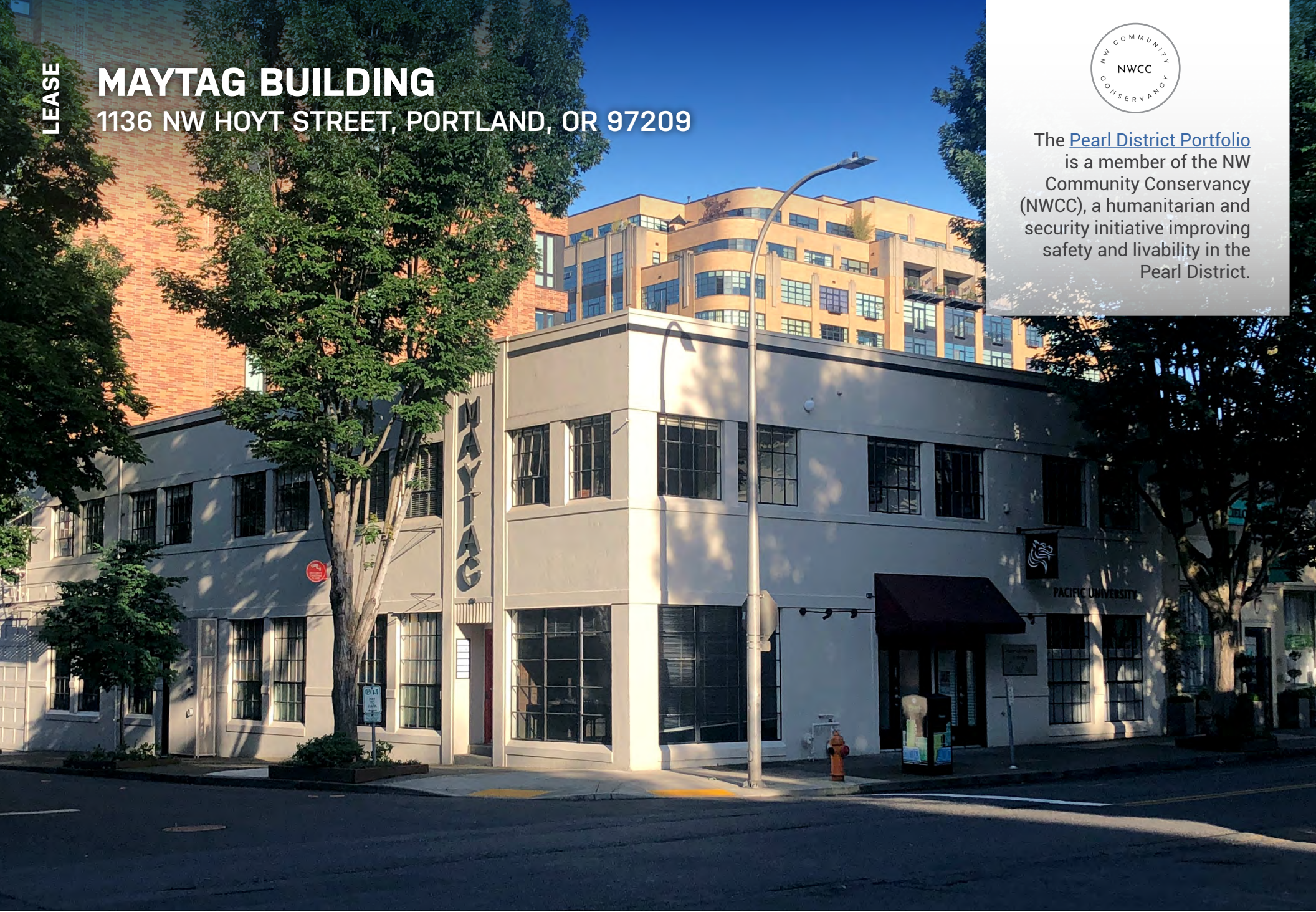
LEASE

MAYTAG BUILDING

1136 NW HOYT STREET, PORTLAND, OR 97209



The [Pearl District Portfolio](#) is a member of the NW Community Conservancy (NWCC), a humanitarian and security initiative improving safety and livability in the Pearl District.



Apex Real Estate Partners
415 NW 11th Avenue, Portland, OR 97209
503.595.2840 / www.apexcre.com

Max Schlesinger, Broker
971.703.4702
Max@apexcre.com



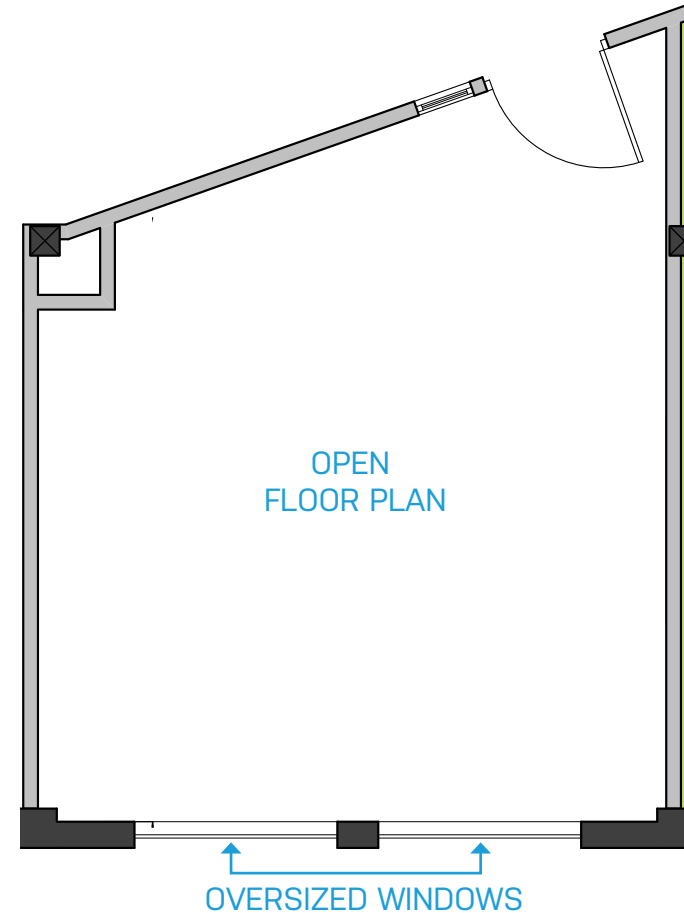
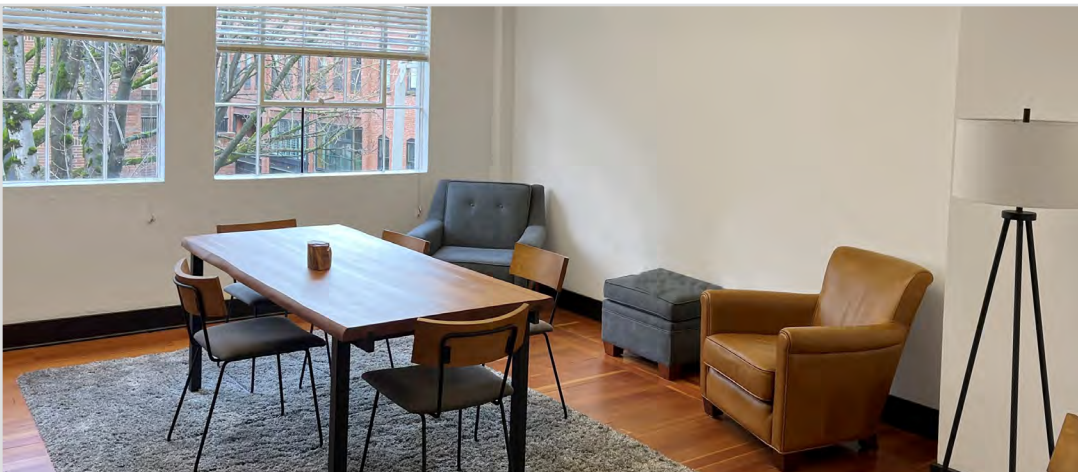
FOR LEASE

- » Suite 230 ± 337 RSF
- » Lease rate \$36.00/RSF NNN
- » Executive-sized suite
- » Open floor plan with oversized windows allowing for abundant natural light throughout
- » Beautiful hardwood floors
- » Parking available for tenants and clients



LOCATION

- » Just steps away from bars, restaurants and shopping in the Pearl District
- » TriMet bus and Portland Streetcar stops less than 1 block away
- » Ample on-street parking
- » Easy access to I-405, Northwest and the Central Business District



PEARL DISTRICT LOCATION

The Maytag Building is in an excellent location in the heart of Portland's creative Pearl District.

It is situated along the same block as the TriMet bus line and Portland Streetcar. The building is mere steps from Portland's premiere mix of art galleries, restaurants, boutiques and amenities. The Pearl District provides the one of the most vibrant, dynamic and energetic entertainment areas within the City of Portland. It's central location makes it very accessible for employees and clients commuting from all over the Portland area with easy access to surrounding freeways, bridges and mass transit.



WALK SCORE 99

Walker's Paradise - Daily errands do not require a car



BIKE SCORE 97

Biker's Paradise - Daily errands can be accomplished on a bike



TRANSIT SCORE 91

Rider's Paradise - World class public transportation



TRIMET STOP (PARTIAL LIST)

TRIMET BUS

PORTLAND STREETCAR

TRIMET MAX

