

FOR LEASE

Loyalty Building

317 SW ALDER STREET
PORTLAND, OR 97204



Image source CoStar

Apex Real Estate Partners
415 NW 11th Avenue, Portland, OR 97209
p. 503.595.2840 / www.apexcre.com

Brendan Smith
503.595.2848
Brendan@apexcre.com



Loyalty Building



Historic charm with upgraded spaces, modern finishes, polished concrete floors and frameless glass conference rooms



High ceilings and great natural light



Convenient downtown location



Bike storage with showers and lockers



Shared conference room with wifi, polycom and projector



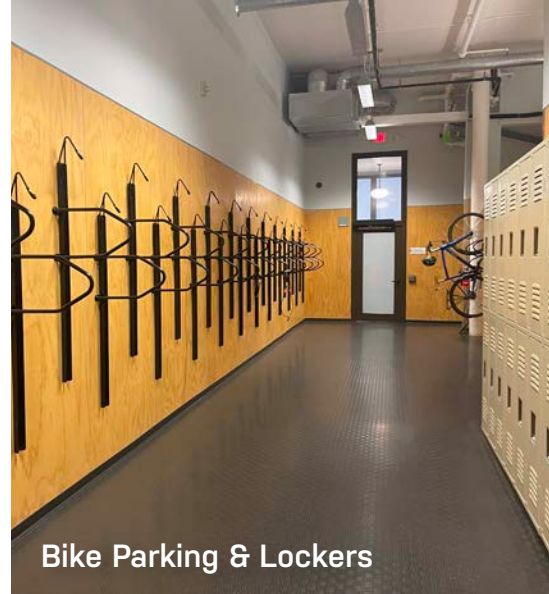
24/7 secured building access



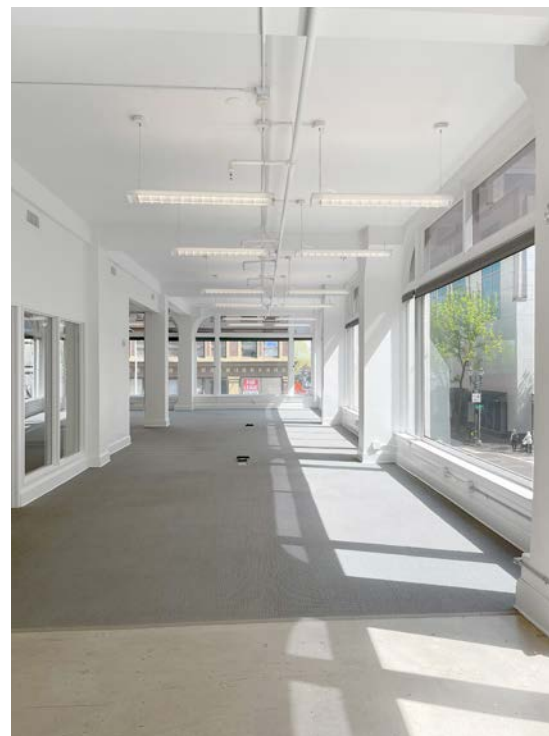
Energy Star rated



Flexible lease terms available



Bike Parking & Lockers

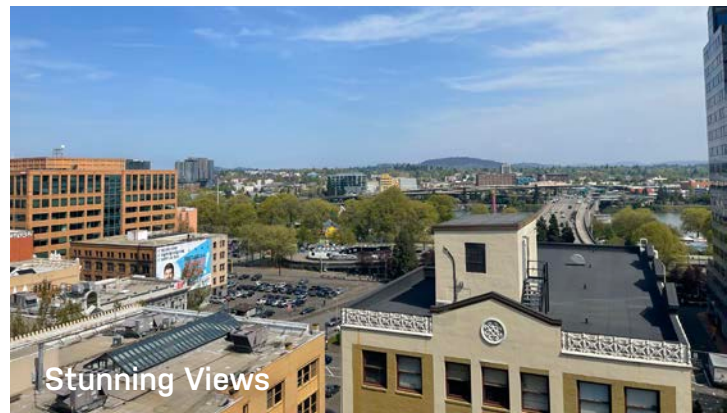


Shared Conference Room



Available

- Suite 101: ± 4,000 SF (Retail)
- Suite 105: ± 119 SF (Retail)
- Suite 200: ± 4,754 SF
- Suite 300: ± 1,289 SF
- Suite 350: ± 3,050 SF
- Suite 600: ± 1,797 SF
- Suite 650: ± 2,250 SF
- Suite 800: ± 1,819 SF
- Suite 850: ± 2,530 SF
- Suite 900: ± 3,996 SF
- Suite 1000: ± 2,443 SF
- Suite 1050: ± 1,971 SF
- Suite 1100: ± 4,828 SF



Central Downtown Location

Ample Surface Lots, Parking
Garages & Street Parking

Excellent Public
Transit Access

Countless Restaurants, Food
Carts, Bars & Cafes

