

CREATIVE FLEX SPACE FOR SUBLEASE

45-57 NE HANCOCK STREET, PORTLAND, OR 97212



Image source CoStar

Apex Real Estate Partners
415 NW 11th Avenue, Portland, OR 97209
p. 503.595.2840 / www.apexcre.com

Miles von Bergen, Director
503.595.2847
Miles@apexcre.com



For Sublease

45-57 NE Hancock Street offers \pm 19,775 SF of flexible workspace with office, production and warehouse with exposed timber and skylights throughout. Demising options also available.

Contact broker for sublease rates.

45 NE Hancock Street

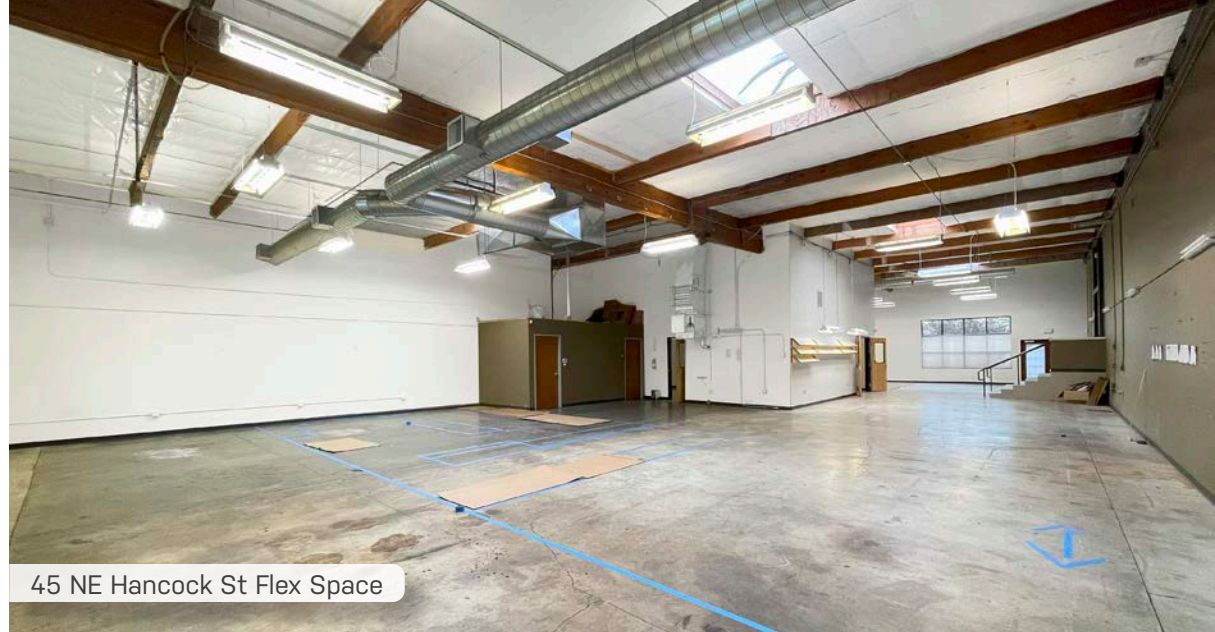
Property Type: Office
Property Size: \pm 9,775 SF
Stories: Single with mezzanine
Year Built: 1970
Roll-up Doors: 5
Flex Space: Temp controlled

57 NE Hancock Street

Property Type: Flex / Warehouse
Property Size: \pm 10,000 SF (divisible)
Stories: Single
Year Built: 1981
Roll-up Doors: 2

Highlights

Parking: \pm 0.6/1,000 SF
Zoning: CM3 - Commercial Mixed Use 3



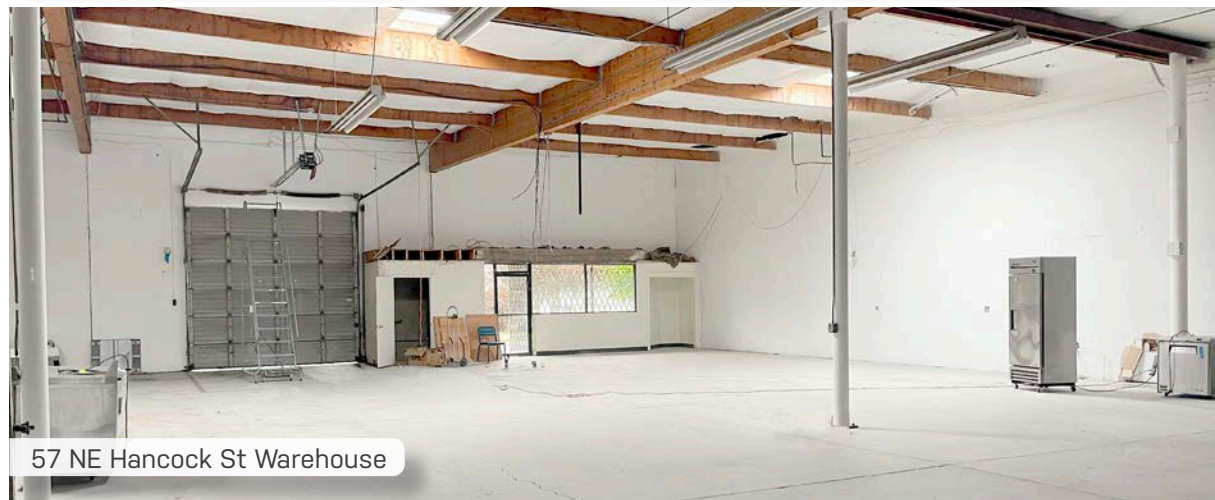
45 NE Hancock St Flex Space



45 NE Hancock St Flex Space

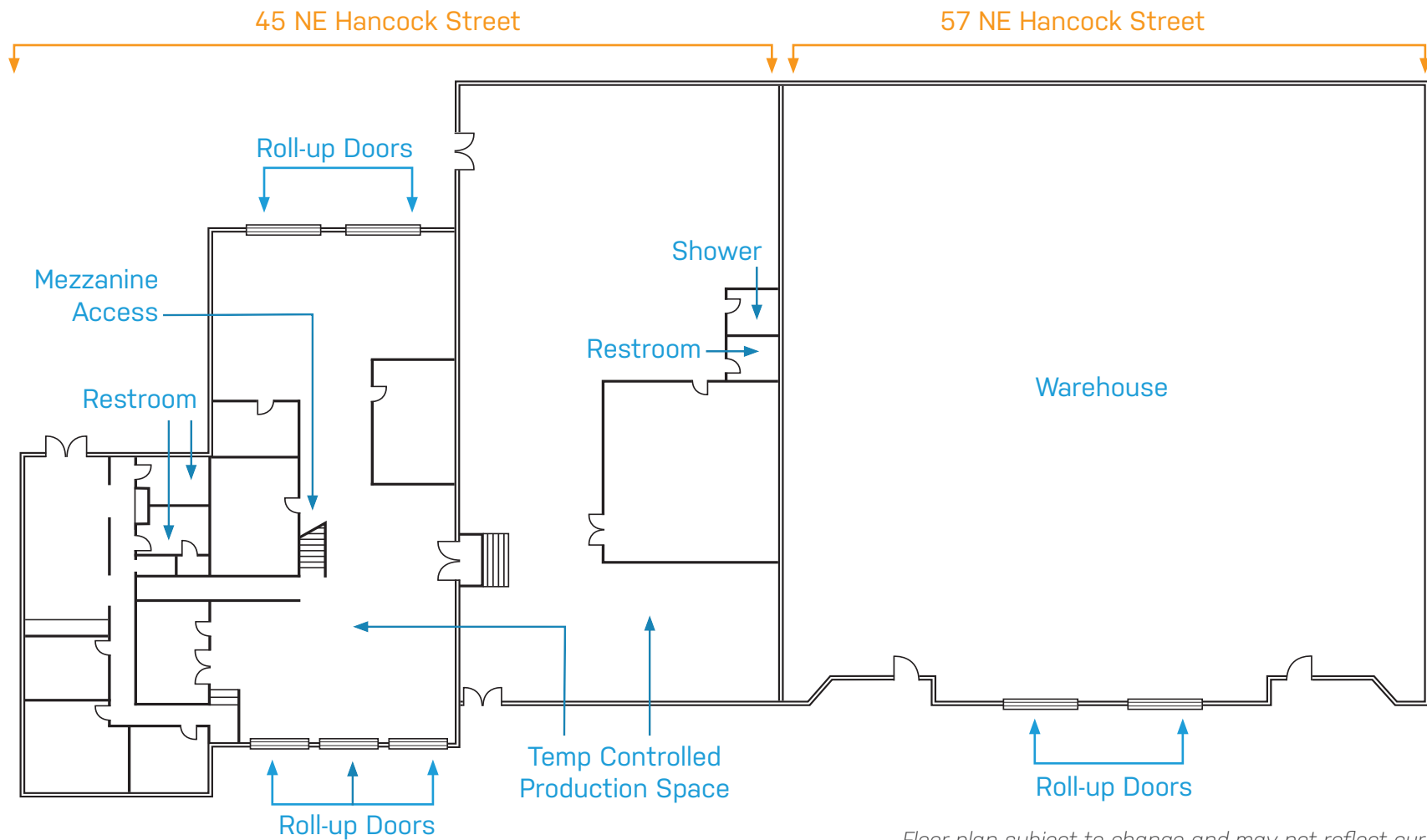


45 NE Hancock St Mezzanine



57 NE Hancock St Warehouse

Floor Plan - Demising Options Available






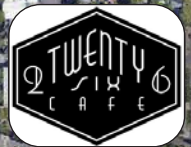
Floor plan subject to change and may not reflect current build-out

Excellent Location & Amenities



45-57 NE HANCOCK ST

-  TriMet Bus
-  TriMet MAX
-  Portland Streetcar



NE HANCOCK STREET



Blossoming Lotus



NE WEIDLER STREET



NE MULTNOMAH STREET



NE MILK JR BLVD
NE GRAND AVENUE

