

FOR SALE

EXCELLENT MEDICAL OFFICE SPACE  
4702-4712 NE GLISAN STREET, PORTLAND, OR 97213



Apex Real Estate Partners  
415 NW 11<sup>th</sup> Ave, Portland, OR 97209  
503.595.2840 / [www.apexcre.com](http://www.apexcre.com)

Jordan Fezler, Broker  
503.595.2844  
[Jordan@apexcre.com](mailto:Jordan@apexcre.com)

Nathan Oakley, Broker  
503.595.2827  
[Oakley@apexcre.com](mailto:Oakley@apexcre.com)



# Offering Highlights

4702–4712 NE Glisan St is an excellent medical office building located across from Providence Portland Hospital perfect for an owner/user. Situated amongst a cluster of clinics of its size, 4702–4712 NE Glisan St is a prime location for a medical office user.

- » ADA access on Glisan
- » On-site parking
- » Mix of open space, private offices, and a conference room
- » 4 bathrooms, 3 ADA
- » Dimisable for multi-tenant medical office space
- » High traffic count and visibility
- » Centrally located with easy highway access
- » Nearby amenities for staff/patients



**Address:** 4702–4712 NE Glisan St  
Portland, OR 97213

**Building Size (SF):** ± 7,815

**Stories:** 2, plus large sprinklered basement, grade door access

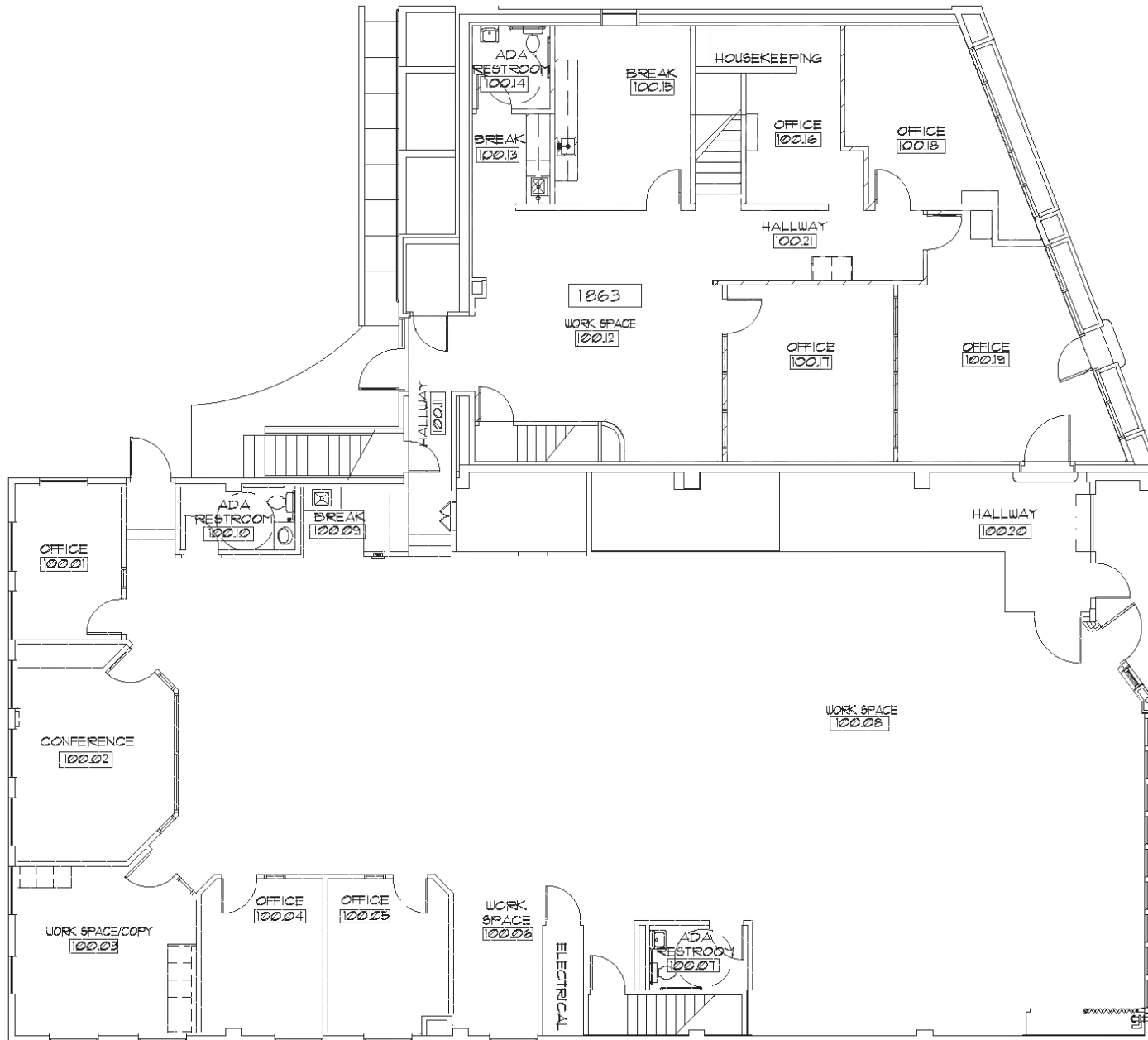
**Year Built:** 1912

**Zoning:** CI2 (Campus Institutional 2)

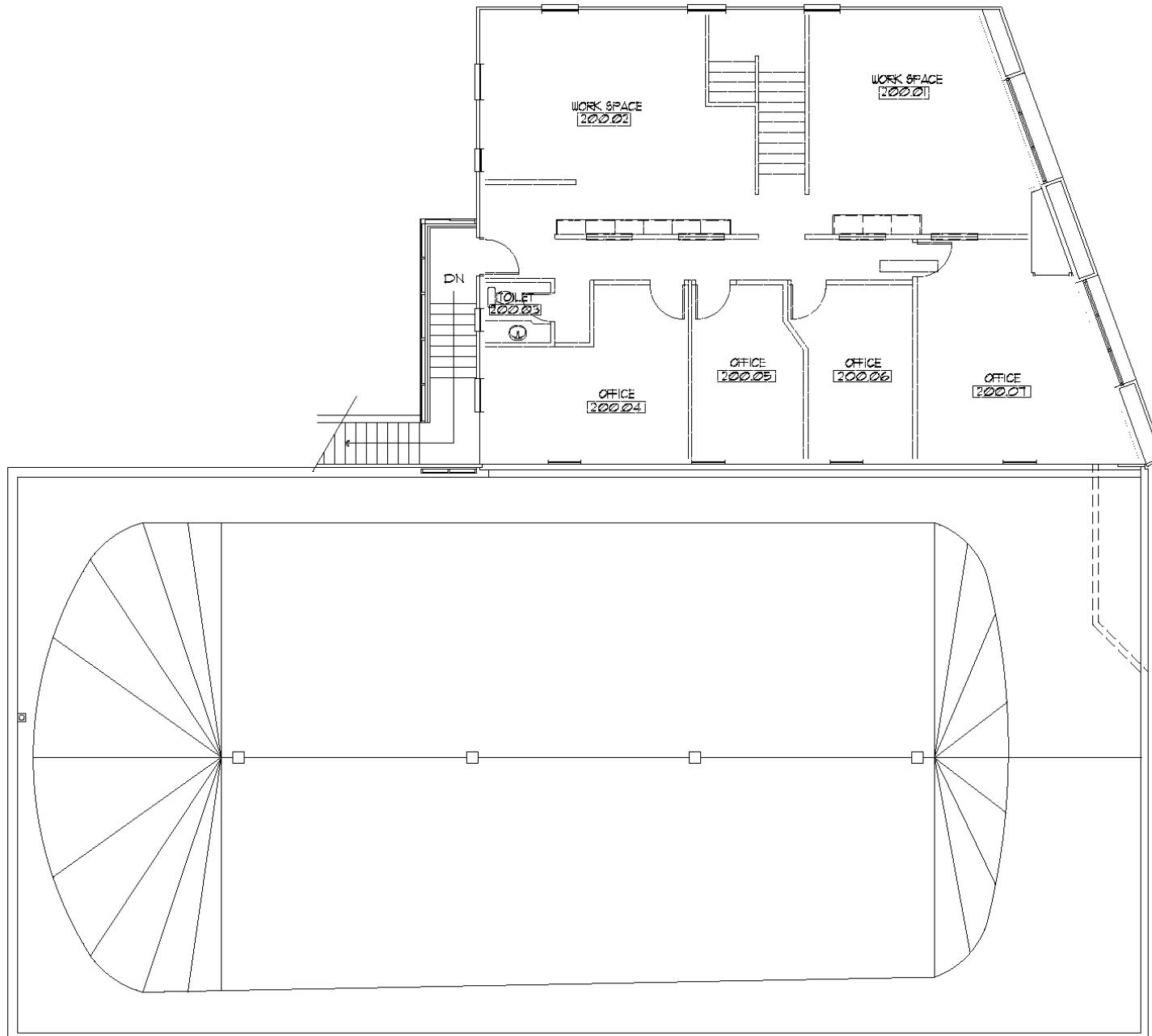
**Land Size (AC/SF):** ± 0.30 AC / ± 13,048 SF

**Parking:** 8 surface parking spaces

# 1st Floorplan



# 2<sup>nd</sup> Floorplan



# Strong Demographics



## Trends - 2 Mile Radius

	2010 Population	100,188		Avg Household Size	2.1		Total Employees	56,418
	2023 Population	108,604		Owner Occupied	54.3%		Total Businesses	8,818
	Median Age	41.3		Renter Occupied	45.7%			
	2010 Households	45,991		Avg Household Income	\$115,351			
	2023 Households	49,222		Median Household Income	\$89,236			
				Total Consumer Spending	\$1.8B			