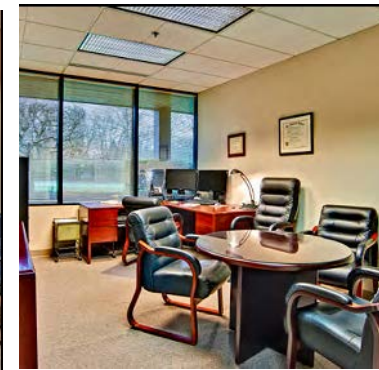


# For Lease

**Address:** 6600 SW 92<sup>nd</sup> Ave, Portland, OR 97222  
**Available:** 3<sup>rd</sup> Floor: ± 2,000 - 13,500 RSF  
**Parking:** ± 153 parking stalls (± 4.37/1,000 SF)  
**Rates:** \$27.00/RSF Full Service

## Space Highlights

- » Located in Washington County.
- » Best value on the west side.
- » Common area upgrades coming in 2024.
- » Excellent window lines allow for abundant natural light throughout.
- » Newly renovated lobby and common areas.
- » Shared monument signage opportunity.
- » Above standard parking ratio.
- » New local hands on ownership.
- » Great public transit options.
- » Easy access to Hwy 217.
- » Excellent proximity to retail, shopping, and restaurant options at Washington Square Mall. Nearby Portland Golf Club, OES, and walking trails.



Matt Cole  
Managing Director  
503.595.2836  
Matt@apexcre.com

Wes Mallard  
Broker  
503.595.2849  
Wes@apexcre.com

# 3<sup>rd</sup> Floor Plan

