

FOR LEASE
SPENCER COURT
1132 SW HARVEY MILK ST
PORTLAND, OR 97205



Apex Real Estate Partners
415 NW 11th Avenue, Portland, OR 97209
503.595.2840 / www.apexcre.com

Max Schlesinger, Broker
971.703.4702
Max@apexcre.com

Nathan Sasaki, Executive Director
503.595.2843
Nathan@apexcre.com



EXCELLENT DOWNTOWN CREATIVE OFFICE



Second floor ± 8,581 RSF



Mix of private offices, conference rooms, huddle rooms, and open floorplan workspace



Expansive window lines & high wood beam ceilings



Infrastructure in place for a potential rooftop garden and deck



Building security and part of a 13-block radius neighborhood security network



Located in the heart of the West End District steps away from a thriving mix of hotels, restaurants, bars, shopping, and amenities



Off-street parking available

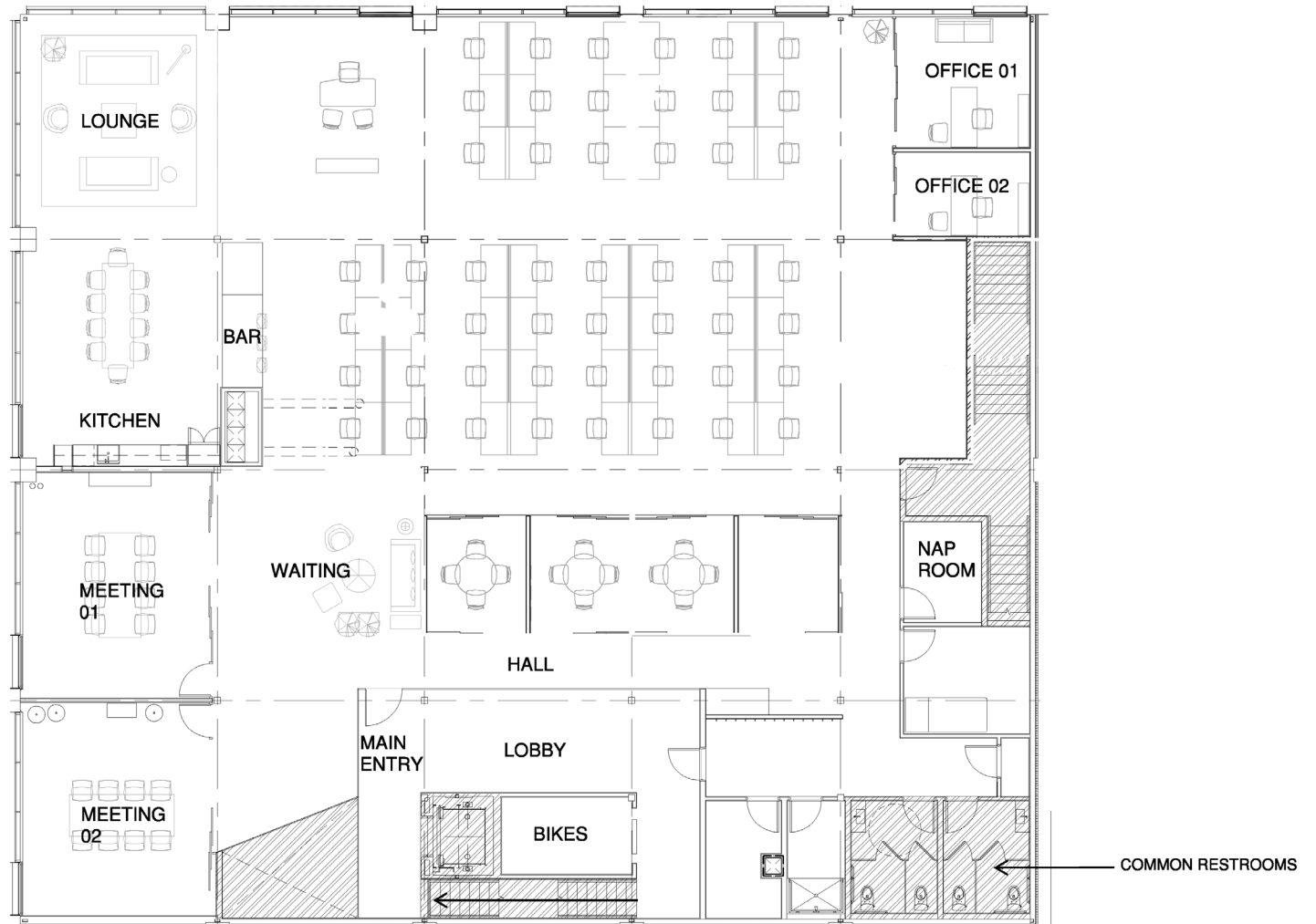


Great highway and public transportation access





FLOOR PLAN



CENTRAL BUSINESS DISTRICT LOCATION

Easily one of Portland's most desirable neighborhoods, the Central Business District is home to some of the city's best known chefs and restaurants, world class art galleries, and vibrant shops and boutiques. Businesses ranging from finance and real estate to renowned advertising agencies and software firms can be found here, nestled amongst green space, cultural centers, and historic architecture that attract visitors and locals from all over.

TRANSIT

- Portland Streetcar
- TriMet Bus
- MAX Light Rail

