

FOR LEASE

# TELEGRAM BUILDING

1101 SW WASHINGTON ST  
PORTLAND, OR, 97205



Apex Real Estate Partners  
415 NW 11<sup>th</sup> Avenue, Portland, OR 97209  
503.595.2840 / [www.apexcre.com](http://www.apexcre.com)

Nathan Sasaki, Executive Director  
503.595.2843  
[Nathan@apexcre.com](mailto:Nathan@apexcre.com)

Max Schlesinger  
971.703.4702  
[Max@apexcre.com](mailto:Max@apexcre.com)



# GREAT OPPORTUNITY IN THE HEART OF PORTLAND'S WEST END

## FOR LEASE

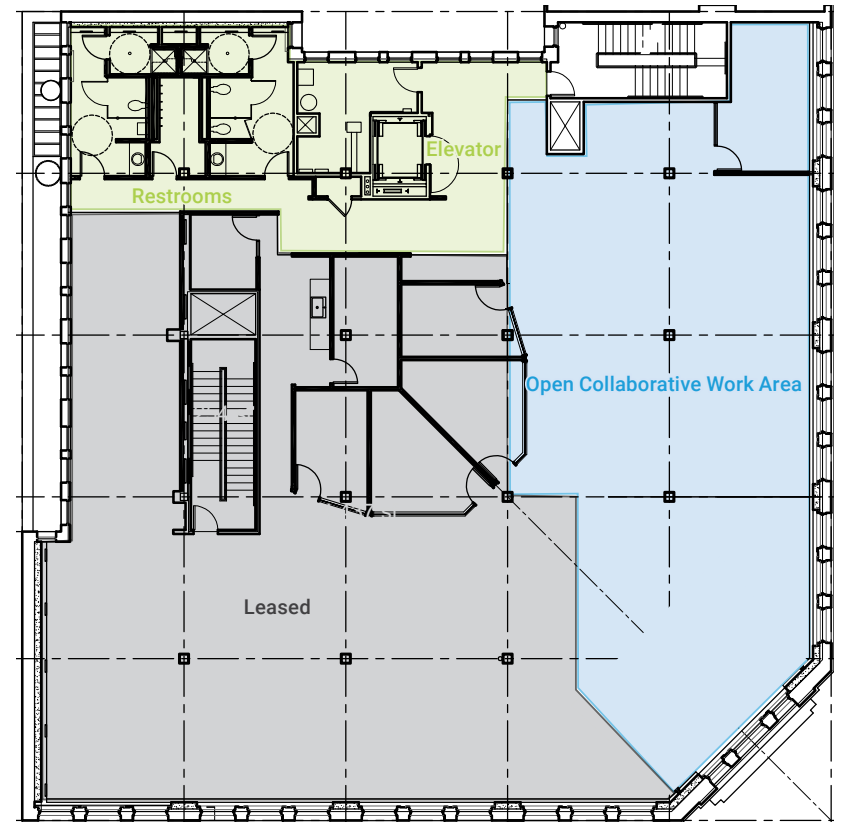
- 3<sup>rd</sup> Floor: ± 500 - 3,432 RSF divisible
- Open collaborative work area
- Common area restrooms with showers
- Exposed brick, primarily open ceilings, and large operable windows provide for abundant natural light throughout



## BUILDING HIGHLIGHTS

- National Register Landmark, classic Georgian Revival styling
- Built 1922, renovated 2004
- Seismically retrofitted construction and separate electric metering by floor
- Welcoming main building lobby with easy elevator access
- Discount offered to Telegram Building tenants at the Mark Spencer Hotel for rooms and use of amenity spaces.
- On-site parking available at market rates
- Signature building in prime location in downtown Portland with fantastic visibility

## THIRD FLOOR ± 500 - 3,432 RSF AVAILABLE



Floor plan & square footage subject to change



# EXCELLENT LOCATION

Portland has been ranked as one of America's Top 20 Best Places to Work, Best Places to Live and one of the top 10 Most Energetic Cities. The West End lives up to Portland's reputation, offering an eclectic mix of some of the best dining, entertainment, local goods, boutiques, destination hotels, thriving nightlife, modern upscale apartments, galleries, and a museum with artists such as Van Gogh and Picasso in its permanent collection. The Telegram Building is an easy walk to these countless attractions and is just steps away from Portland Streetcar and MAX lines. Also given its proximity to the I-405, Hwy 26, I-5, and W Burnside St, the Telegram Building offers convenient access to commuters and visitors.

